



BELSHINA

**TEST REPORT ABOUT NEW ALL STEEL BELSHINA TYRES
11R22.5 MOD. BEL-296 «ESCORTERA» IN THE CONDITIONS
OF COMPANY «TRANSESCO»
(2014-2016, VIETNAM)**



BELSHINA

1. Technical specification of tyre 11R22.5 mod. BEL-296 ESCORTERA



SPECIFICATIONS:	
TYRES SIZE	11R22.5
MODEL	Bel-296
TYPE	TL
TREAD PATTERN	HIGHWAY
RIM: RECOMMENDED	8.25x22.5
ALLOWED	7.50x22.5
OVERALL DIAMETER (mm)	1050
SECTION WIDTH (mm)	279
LOAD INDEX	148/145
MAXIMUM LOAD (kg)	3150/2900
SPEED INDEX	L
MAXIMUM SPEED (km/h)	120
INFLATION PRESSURE (kPa/psi)	850/123
TYRE TREAD DEPTH (mm)	15



BELSHINA

2. Operation of tyres 1R22.5 BEL-296 ESCORTTERA

NAM HANOI

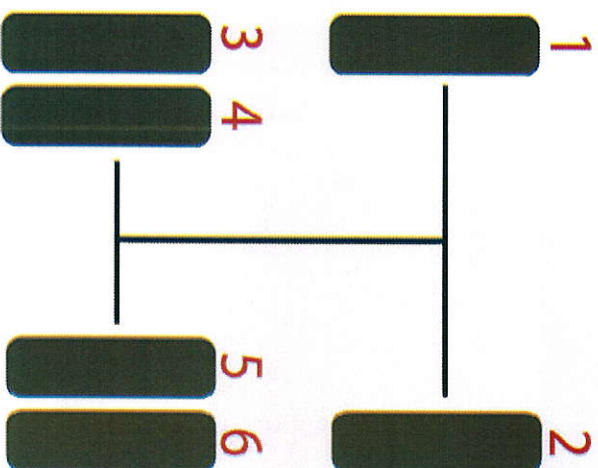


The tyres in a quantity of 5 pieces have been installed on the bus Daewoo BS090 reg. № 29B-093.71 on the date of **03.12.2014**.



BELSHINA

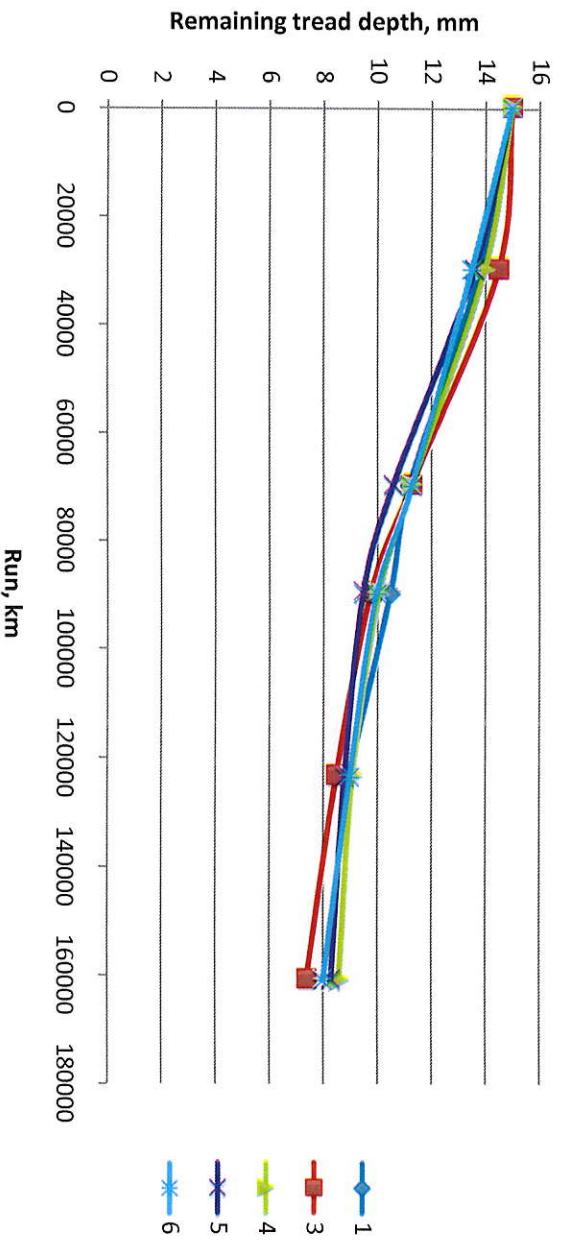
The positions of tyres are presented by the following scheme:





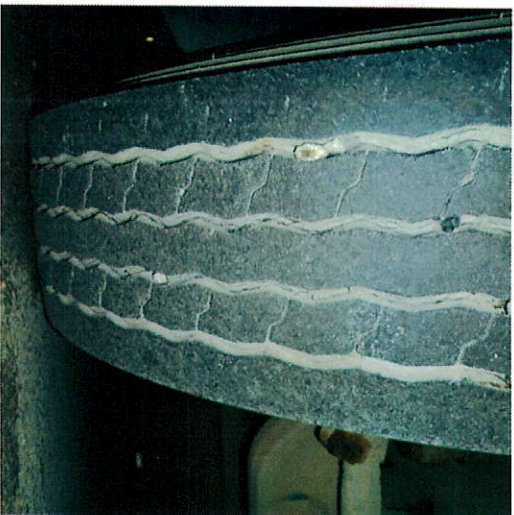
BELSHINA

3/12/2014	1	15	0	3	15	0	4	15	0	5	15	0	6	15	0
1/4/2015	1	13.8	30 091	3	14.5	30 091	4	14	30 091	5	13.6	30091	6	13.5	30 091
20/8/2015	1	11.2	70 000	3	11.3	70 000	4	11.3	70 000	5	10.6	70000	6	11.3	70 000
4/11/2015	1	10.5	90 000	3	9.8	90 000	4	10.1	90 000	5	9.5	90000	6	10	90 000
22/2/2016	1	8.95	123 820	3	8.5	123 820	4	9.1	123 820	5	8.8	123820	6	9	123 820
04/7/2016	Spare		161 332	3	7.4	161 332	4	8.6	161 332	5	8.3	161332	6	8	161 332

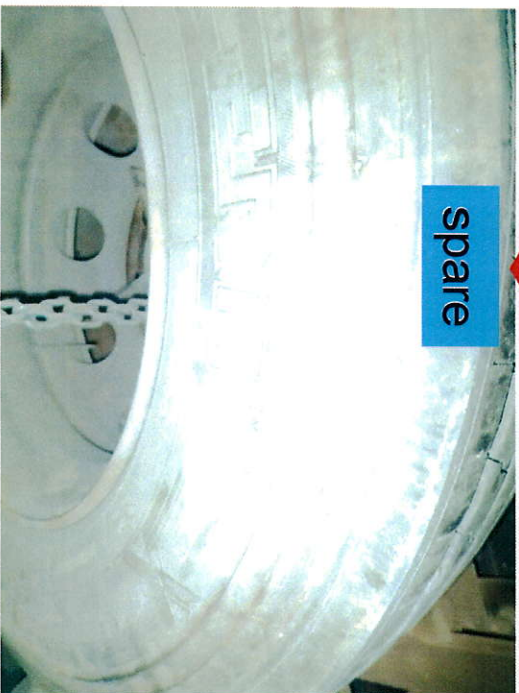




BELSHINA



Conditions of tyres' tread pattern is quite good



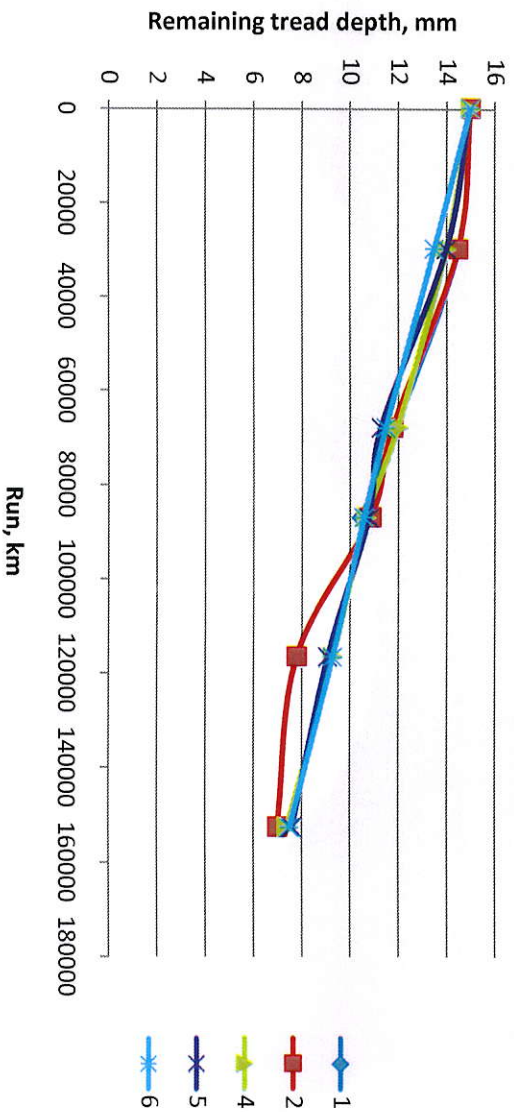


The tyres in a quantity of 5 pieces have been installed on the bus Daewoo BS090 reg. № 29B-094.73 on the date of **04.12.2014**



BELSHINA

Date	Position	Tread depth, mm	Run, km	Position	Tread depth, mm	Run, km	Position	Tread depth, mm	Run, km	Position	Tread depth, mm	Run, km	Position	Tread depth, mm	Run, km
4/12/2014	1	15	0	2	15	0	4	15	0	5	15	0	6	15	0
1/4/2015	1	14.5	29 980	2	14.5	29 980	4	14	29 980	5	14	29 980	6	13.5	29 980
20/8/2015	1	11.9	68 000	2	11.8	68 000	4	12	68 000	5	11.3	68 000	6	11.5	68 000
4/11/2015	1	10.5	87 000	2	10.9	87 000	4	10.7	87 000	5	10.8	87 000	6	10.6	87 000
22/2/2016	spare		116 781	2	7.8	116 781	4	9.3	116 781	5	9.1	116 781	6	9.3	116 781
4/7/2016	spare		152 832	2	7	152 832	4	7.4	152 832	5	7.6	152 832	6	7.5	152 832





BELSHINA



Conditions of tyres' tread pattern is quite good

spare





BELSHINA

3. Conclusion

Tyres 11R22.5 mod. BEL-296 «ESCORTERA» produced by «BELSHINA» are performing well. The mileage of tyres has been reached to 150 000 – 160 000 km. Tyres are still in operation and tend to reach up to 200 000 km.

We hope for the further fruitful cooperation.

Technical specialist

Sergei Potapenko

Director

Oleg Rutkowski

